

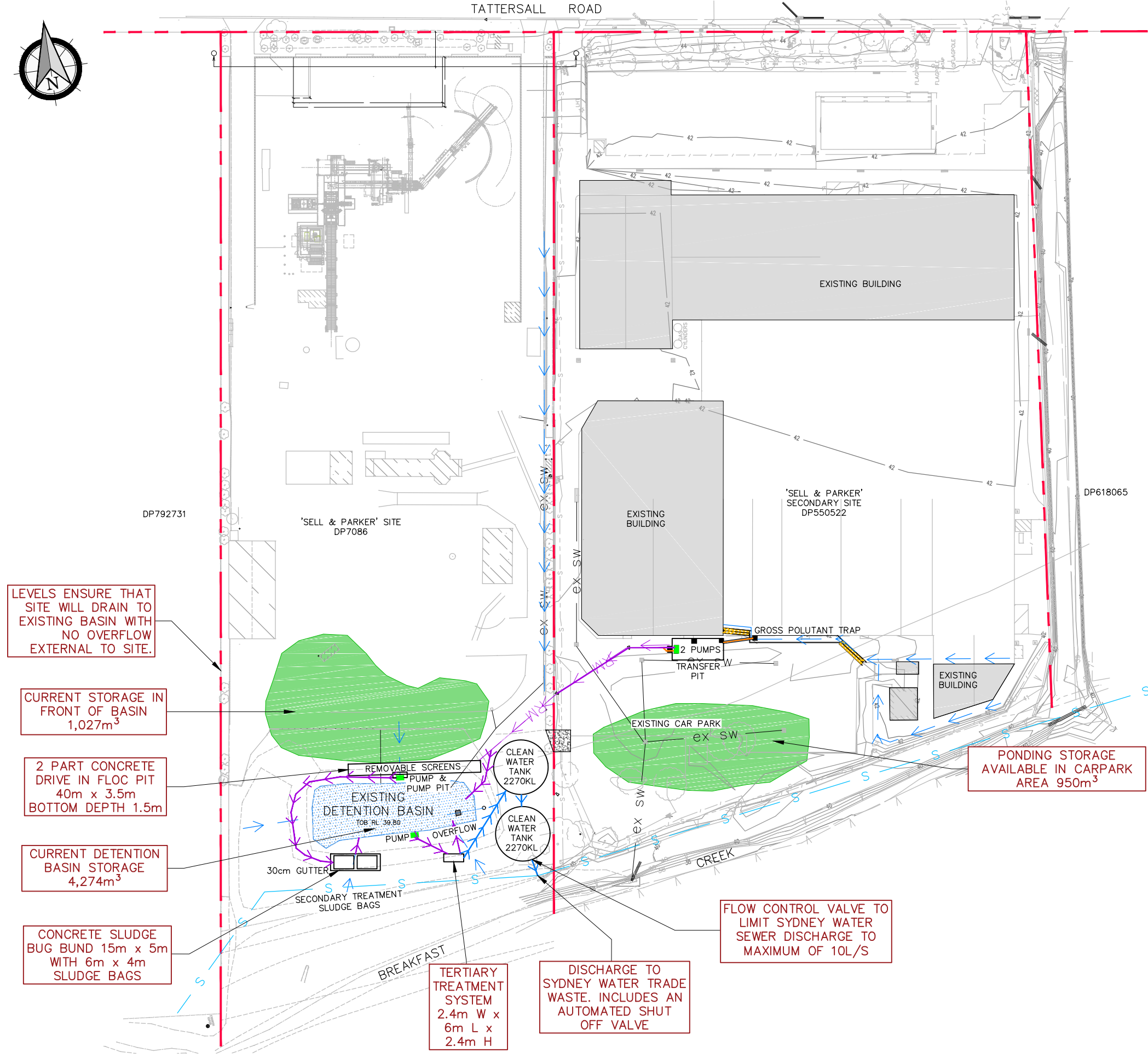


APPENDIX 9

SITE WATER RETENTION AREAS

LEGEND

- FLOW ARROWS
- SEWER LINE
- PIPEWORK - DIRTY WATER
- PIPEWORK - TREATED WATER
- PUMPS
- REAR YARD STORAGE CAPACITY



- LEVELS ENSURE THAT SITE WILL DRAIN TO EXISTING BASIN WITH NO OVERFLOW EXTERNAL TO SITE.
- CURRENT STORAGE IN FRONT OF BASIN 1,027m³
- 2 PART CONCRETE DRIVE IN FLOC PIT 40m x 3.5m BOTTOM DEPTH 1.5m
- CURRENT DETENTION BASIN STORAGE 4,274m³
- CONCRETE SLUDGE BUG BUND 15m x 5m WITH 6m x 4m SLUDGE BAGS

PONDING STORAGE AVAILABLE IN CARPARK AREA 950m³

FLOW CONTROL VALVE TO LIMIT SYDNEY WATER SEWER DISCHARGE TO MAXIMUM OF 10L/S

TERTIARY TREATMENT SYSTEM 2.4m W x 6m L x 2.4m H

DISCHARGE TO SYDNEY WATER TRADE WASTE. INCLUDES AN AUTOMATED SHUT OFF VALVE

drawing title:

SITE WATER RETENTION AREAS

location: LOT 2 D.P.550522, LOT 5 D.P.7086 & LOT 100 D.P.792731
 council: (AUTHORITY - EPA)
 dwg ref: 190337-REP-004

client: SELL AND PARKER

central coast office ph: (02) 4305 4300
 hunter office ph: (02) 4978 5100

www.adwjohnson.com.au

ver.	date	comment	drawn	pm	level information	scale (A3 original size)	notes
D	12.07.17	GENERAL AMENDMENTS	KT	ML	DATUM: N/A CONTOUR INTERVAL: N/A	0 25.0 50.0 62.5m SCALE: 1:1250 (FULL)	